

AB5T

Load Bars

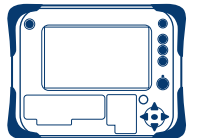
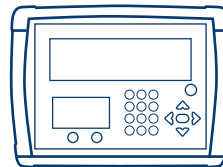
Rugged with Galvanised Finish

Tubular sealed housing, makes the load bars fully protected from rain, soil, manure, etc. A unibody design, light and easily to move between different weighing sites.

The galvanized finish can gives the best quality for long term durability in harsh environment.

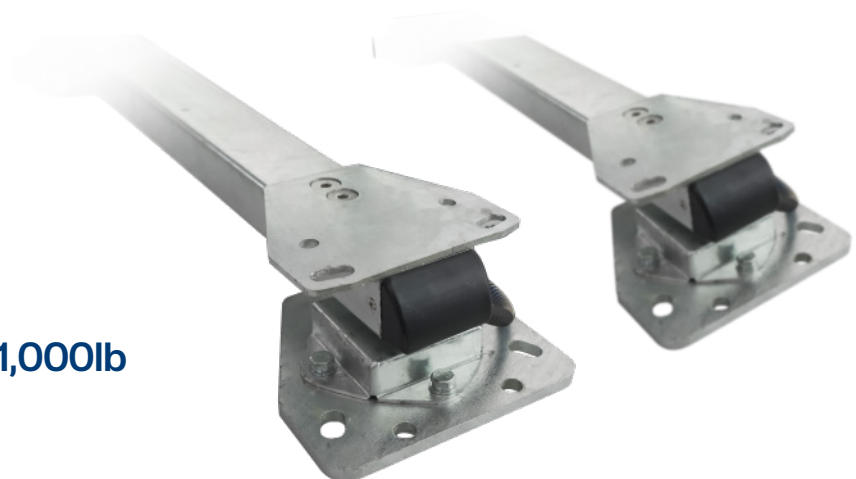


It's compatible with our FOX/FOX Pro indicators without calibration, and also it compatible with most other professional indicators without calibration (for models list, please consult our dealers).

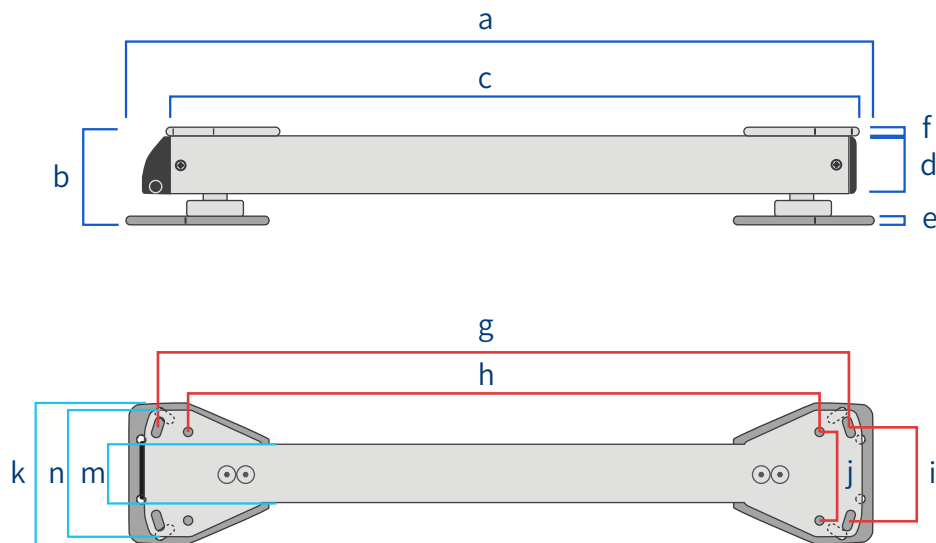


The internal load cells are made of aircraft grade aluminum material, and with IP66 protection, for each bar, there is a 5m PUR/PVC cables with stainless steel spring protected, keep the cable from damage of rolling and rodent, etc.

Heavy Capacity up to 5,000kg | 11,000lb



Dimension Drawings



Models	a	b	c	d	e	f
AB5T	1100	104	990	50	5	50

Models	g	h	i	j	k	n	m
AB5T	950	860	150	120	210	180	80

Specifications

Part No.	170009
Models	AB5T
Length	1100mm 43"
Capacity	5000kg 11000lb
Resolution	0.5kg 1.0lb
Bar Width	80mm 3"
Height	110mm 4"
Weight	40kg
Cable Length	5m
Cable Type	4-wire PVC+PUR cable with stainless steel spring cover, protection from sunlight, oil, cold, rolling and rodents
Load Cell Type	Aircraft grade aluminum double shear beam
Accuracy	+/-1%F.s. or 2d
Operating Temperature	-10 to +40°C